

Sentinel Boat Monitor

Part Number:
80-911-0250-00



Key Features

- » Monitor and Control CZone vessels remotely
- » Repeats all CZone alarms via mobile notification
- » Real time GPS tracking and journey logs
- » Easy to install, only requires power and network
- » Easy to use iOS, Android and web apps



Integrated Features

Monitoring

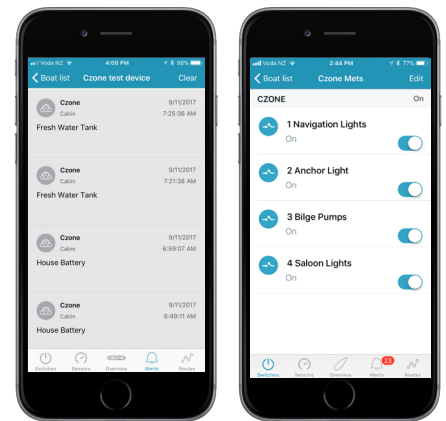
- » Remote monitoring of all CZone sensors
- » NMEA 2000 sensors
- » Bilge and fluid levels
- » Battery voltage and capacity

Control

- » Control pre-configured CZone circuits or Modes remotely
- » Activate bilge or lighting
- » Open or close mechanical locks

Alarms

- » Repeats all CZone alarms in real-time via mobile app notification
- » Ensure continued peace of mind while away from your vessel



Sentinel Features

Data Logging

- » Sentinel logs all sensor data, 7 days on mobile app, 14 days on web app, unlimited cloud storage

Journey Logs

- » Keep track of past routes, mileage, duration and speed. Trips are automatically added to the journey log
- » Overlay sensor history over routes

Geofence Alert

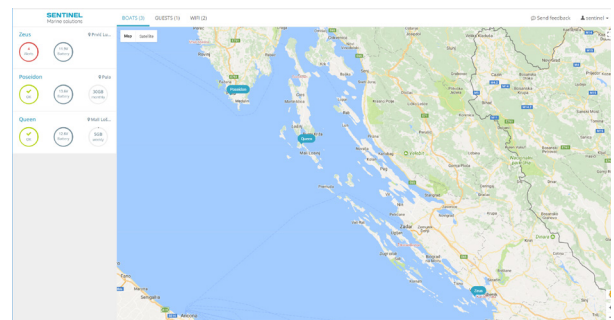
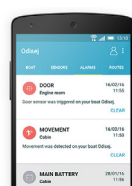
Geofencing alerts can notify the user when the vessel moves outside of a given area, providing a handy tool for anchor watch or theft tracking.



Intrusion Detection

Boat Monitor offers the ability to wire theft countermeasures, from magnetic breach sensors for windows and doors, motion detection sensors, or engine ignition.

Intrusion Detection is easy wired to the standalone Sentinel Module, or can be achieved using CZone networked monitoring and remote alarm monitoring.



Easy Integrated Configuration

CZone-Sentinel Integration is easily configurable. Once connected to the CZone backbone, Sentinel will automatically fetch pre-configured CZone Monitoring and Control Circuits and make them available through the Sentinel interfaces.

Standalone System Configuration

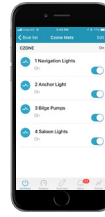
Sentinel standalone systems require manual wiring of each circuit to the module, and full configuration of each Control and Monitoring input or output. See Sentinelmarine.net for more information.

Integrated CZone/Sentinel System



CZone Display

- » Control
- » Monitoring
- » Alarms



Sentinel Apps

- » Control
- » Monitoring
- » Alarms
- » GPS Tracking

Integrated System

- » CZone Inputs, Outputs and Sensors are all available via the Sentinel Interface.
- » Easy configuration & simple NMEA2000 connection.

Stand Alone

- » Limited Inputs, Outputs and Sensors available.
- » Manual wiring required for each.

CZone Network

NMEA 2000

Sentinel BM40

Analogue Wiring



CZone Modules

- » Outputs
- » Inputs
- » Sensors

Analogue Sensors

- » Outputs
- » Inputs
- » Sensors

Outputs

- » Battery Switch
- » Aircon
- » Lights

Inputs

- » Bilge Pump
- » Door Sensor
- » Ignition

Sensors

- » Battery Levels
- » Fluid Levels
- » Shore Power

Specifications

Sentinel Boat Monitor Specifications

GPS	GPS/GLONASs/Galileo/QZSSS
Modem	4G Modem (with 3G fallback) Works worldwide (except USA)
Power Supply	11V to 30V DC Normal Operation - 35mA
Consumption	Maximum: 300mA (Internal Battery Charging) Sleep Mode: <1mA
Internal Backup Battery	4 Hours Operation Without External Supply
Internal Flash Memory	More than 30 days Operation Without Network Connection (Data is synched to server when network connection is available)
Operating Temperature	-25°C to +55°C
Storage Temperature	-40°C to +70°C
Sensors	2 Digital Inputs (Bilge, Door) 4 Analog Inputs for Battery Volts Up to 30V NMEA 2000 Interface
Weight	300g
Dimensions	100mm x 100mm x 40mm
Certification	CE, FCC, RCM

Part Number & Pricing

Part Number	Description
80-911-0250-00	Sentinel BM40 Boat Monitor Kit

Availability - Refer to CZone.net

BM40 Boat Monitor Kit:

The Sentinel BM40 Boat Monitoring Kit is the CZone-ready integration kit. This kit includes the BM40 Boat Monitor to be mounted and networked over NMEA2000 with the CZone system.

The kit also includes:

- » 1 Year Subscription
- » Includes: 10 NMEA sensors, 28 CZone switches and all CZone alarms
- » Subscription starts on device activation
- » Subscription can be renewed/updated at www.sentinelmarine.net